

## Adaptive Planning

# Adaptive Planning

**Adaptive Planning is the market leader in cloud-based budgeting, forecasting, and reporting. Take advantage of rich functionality and an easy-to-use interface with the world's most usable cloud CPM application – and elevate your corporate performance management with Adaptive.**

### Drive Real Competitive Advantage with Adaptive

Companies still using spreadsheets for budgeting and forecasting are crippled by broken links, data integrity issues, and version control errors. But on-premise applications aren't the solution either – old tools like Hyperion, Cognos, and SAP are expensive and require a skilled IT staff to manage and maintain.

There is a better way. Adaptive's cloud platform enables rapid deployment at an affordable cost with access from anywhere – without the hassles of IT. Our high-performance modeling engine with in-memory calculations and fast data access is a great solution for mid-sized businesses and enterprise organizations alike.

- Reduce cycle time by up to 90%
- Decrease errors and improve data integrity with automatic aggregation
- Improve transparency with audit trail, version control, and analysis tools
- Enhance business support with integrated workflow and process management

**“Adaptive has saved me weeks of time. It used to take us three weeks to finalize our budget, and now we can finalize in minutes.”**

Mark Smith  
Director of Financial Planning, CDPHP

### Personnel Planning

- Plan by individual, employee type, or group for true flexibility and ease of use
- Calculate detailed payroll taxes (FICA, FUI, SUI, Medicare)
- Allocate headcount and costs across departments or projects
- Set access control to salary detail for tight security

### Capital Planning

- Customize for your depreciation method (straight line, double declining, etc.)
- Model effect of capital spending on P&L, balance sheet, and cash flow
- Drive capital spending from headcount, production units, or whatever you want

### Other Expense Planning

- Track expenses such as project, fund, or program with unlimited custom dimensions
- Incorporate drivers such as cost per trip to plan expenditures
- Establish centralized assumptions and formulas that can be locked from user editing

## Adaptive Planning

### Sales and Revenue Planning

- Integrate with CRM and ERP systems for real-time sales data
- Use spread tables to drive revenue recognition and deferred revenue
- Design your own custom sheets for multi-dimensional forecasting

### Balance Sheet and Cash Flow Planning

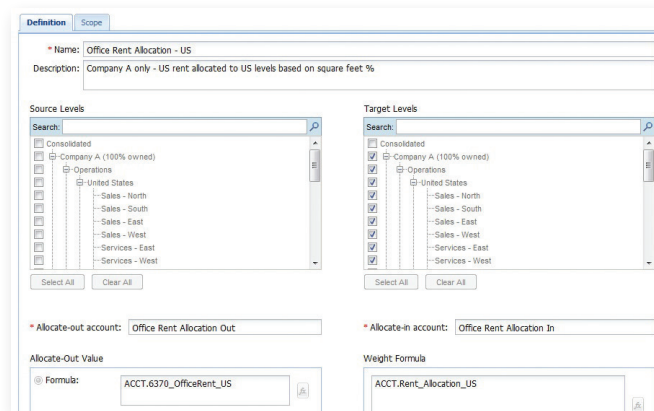
- Link model elements for dynamic, integrated financial statements
- Create a loan amortization sheet to drive debt calculations
- Perform what-if analyses quickly with different cash scenarios

Levels: Total Company		Loans: Loan 1		ACCOUNTS BY TIME						
#		JAN-2015	FEB-2015	MAR-2015	Q1-FY15	APR-2015	MAY-2015	JUN-2015		
1	Inputs									
2	Initial Loan Balance			3,000,000	3,000,000	3,000,000	3,000,000	3,000,000		
3	Input Balance (if acquiring loan)									
4	Principal Payment (if Variable Rate)									
5	Months			24	24	24	24	24		
6	Amort Month					1	2	3		
7	Interest Rate %					0	0	0		
8	Draw Down									
9	Total									
10	Amortization									
11	Beginning Balance	0	0	3,000,000	0	3,000,000	2,878,556	2,756,809		
12	Total Payment	0	0	0	0	128,944	128,944	128,944		
13	Interest Payment	0	0	0	0	7,500	7,196	6,892		
14	Principal Payment	0	0	0	0	121,444	121,747	122,052		
15	Ending Balance	0	0	3,000,000	3,000,000	2,878,556	2,756,809	2,634,758		

Loan Amortization Sheet

### Self-Service Reporting & Analysis

- Easily create reports with drag and drop – no scripting or technical skills required
- Slice and dice across dimensions, versions, departments, etc.
- Create HTML reports for analytics and presentation-quality reports for packages
- Drill in to underlying detail for strategic analysis



Allocation Manager

### Streamlined Allocations

- Replace multiple complex formulas with rules that are easy to create and understand
- Improve accuracy with balanced allocations and no circular references
- Adapt to changing rules, regulations, and company policy with date-effective rules

### Powerful Currency Management

- Save time with automated currency exchange calculations
- Increase flexibility with user-defined exchange rate types
- Enhance reporting capabilities by reporting any data in any currency

### Multiple Instances

- Preserve organizational autonomy for organizations on disparate ERPs or in different languages
- Retain individual models that are easily linked together in Adaptive to report consolidated data
- Improve coordination in complex organizations with different structures and planning cycles